



- Western Gauge
- Mercer Valve
- Superlok
- GPM Pump



Proud member of the Unified Valve Group



PRODUCT OVERVIEW

A Trusted Advisor and Supplier for the Oil, Energy, Mining and Industrial Sectors





PRODUCTS TO TRUST

The Latest Technology & Measurement Solutions

Quality and Service

We pride ourselves on being innovators in the industry by continually offering the latest technology and measurement solutions, providing some of the best customer support in the marketplace. Our stock is ready for same-day shipping. Talk to our staff at WGI to take advantage of their wealth of knowledge in the instrumentation field. We are a great resource to answer your questions for your applications. Our staff can ship your order same day from our huge inventory or locate and promptly fill your order using trusted backup vendors we have put into place.



Look for the WGI "CACTUS" Logo that identifies our manufactured product as adhering to exacting WGI STANDARDS. These products are manufactured by ISO certified factories and majority of our products have CRN (CANADIAN REGISTRATION NUMBERS). This number guarantees top quality and extremely reliable workmanship.

Our EDMONTON and SASKATOON locations offer full calibration and dead-weight certification for your pressure indicators. Ask us about a custom ID printed face for your larger OEM requirements!

- Pressure Gauge's
- Temperature Indicators
- Needle & Ball Valves
- Regulators
- Electronics
- Support Accessories



unifiedvalve.com

Calibration Services

WESTERN GAUGE AND INSTRUMENTS can offer the following services at our repair centers located in EDMONTON and SASKATOON, please contact us to find out which location serve your needs.

General Repairs

WGI repairs all makes and models of Gauges, and is the Western Canadian repair center for 3D Instruments, and Direct Drive Pressure Gauges. Deadweight Certificate of Calibration available upon request. WGI calibrations on your Pressure Devices and Temperature Instruments, are traceable to NIST (National Institute of Standards and Technology). WGI uses Silicone, Glycerin and other Specialty fluids for Pressure Gauges and BiMetal Thermometers. Ask us about Stainless Steel or Aluminum tags installed for your custom requirements. WGI can also mount various instruments to your Diaphragm or Chemical Seals, as well as fill with either Silicone Oil, Glycerin or High Temperature Products to meet your needs.

Custom

CUSTOM DIAL FACES: Custom Dials are available in many different scales including Psi, kPa, kg/cm², cm of H₂O, feet of water, inches of Hg, inches of H₂O, ounces per square inch, bar, mBar, MPa, and many more. Customer "name on dial" service also available.



PHONE:

Calgary:..... 403.236.4888Fully Stocked Location
Grande Prairie:.... 780.539.7800 Stocking Soon!
Edmonton:..... 780.463.3800Fully Stocked Location
Red Deer:..... 403.340.3922 Stocking Soon!
Saskatoon:..... 306.986.0099Fully Stocked Location
Brooks: 403.362.4272 Stocking Soon!
Fort St John: 250.787.0080Fully Stocked Location

CONTACT US TODAY

EMAIL: sales@wgilt.com

Classic 150/200/250/350

Classic series gauges are for general service applications where cost savings are needed. Suited for use with water, oil, air, gas and other non-corrosive media. Not for use with oxygen.

Sizes

1.5" through 3.5" Dial – Bottom and back connection

Case

Steel

Accuracy

± 3%-2%-3% ASME B40.1 Grade B



Elite 150 Stainless

Elite 150 series stainless internal gauges have a 304 stainless steel case and 316 stainless steel internals, Silicone fill for use in harsh environments. Suited for use with water, oil, air, gas and other corrosive media.

Sizes

1.5" Dial – Bottom and back connection

Case

304 Stainless Steel

Accuracy

± 2%-1%-2% ASME B40.1 Grade A



HVAC Gauge

The WGI Contractor gauge was designed to service the mechanical industry. The HVAC gauge offers high reliability at an economical price and features a corrosion resistant, stainless steel case and acrylic window.

Sizes

4.5" Dial – Bottom connection

Case

Stainless steel

Accuracy

± 1% ASME B40.1 Grade B



Elite 200 Stainless

Elite 200 series gauges have a 304 stainless steel case, 316 stainless steel internals, silicone fill for use in harsh environments. Suited for use with water, oil, air, gas and other corrosive media.

Sizes

2" Dial – Back and Bottom Connection

Case

304 Stainless Steel

Accuracy

± 2%-1%-2% ASME B40.1 Grade A



Elite 250 Brass

Elite 250 series brass gauges have a 304 stainless steel case, silicone fill for use in harsh environments. Suited for use with water, oil, air, gas and other non-corrosive media.

Sizes

2.5" Dial – bottom and back connection

Case

304 Stainless Steel

Accuracy

± 2%-1%-2% ASME B40.1 Grade A



Elite 250 Stainless

Elite 250 series gauges have a 304 stainless steel case and 316 stainless steel internals, silicone filled for use in harsh environments. Suited for use with water, oil, air, gas and other corrosive media.

Sizes

2.5" Dial – Bottom and back connection

Case

304 Stainless Steel

Accuracy

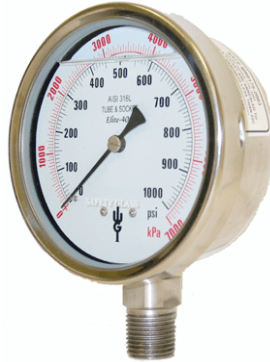
± 2%-1%-2% ASME B40.1 Grade A



Elite 400 Stainless - NACE

WGI Elite 400 series pressure gauges have a 304 stainless steel case for use in harsh or corrosive environments, and silicone filled for pulsation dampening. Suited for oil and gas equipment, refineries, hydraulic equipment, process systems etc.

- Size**
4" Dial – Bottom and back connection
- Case**
304 Stainless steel
- Accuracy**
± 1% Full Scale ASME B40.1 Grade A



Elite 600 Stainless - NACE

WGI Elite 600 series pressure gauges have a 304 stainless steel case for use in harsh or corrosive environments and is silicone filled for pulsation dampening. Ideally suited for oil and gas equipment, refineries, hydraulic equipment, process systems etc.

- Sizes**
6" Dial – Bottom connection
- Case**
304 Stainless steel
- Accuracy**
± 0.5% ASME B40.1 Grade A



Elite 450 Process Gauge – Solid Front

WGI's Elite 450 NACE process gauge was engineered for the oil and industrial process industries designed with operator safety in mind. Features a solid front blow-out back

- Sizes**
4.5" Dial – Bottom connection
- Case**
Phenolic
- Accuracy**
± 0.5% ASME B40.1 Grade B



Diaphragm Gauge (Low Pressure)

WGI Diaphragm gauges are sensitive instruments used in low pressure applications not exceeding 10 PSI. Typical applications include air flow indicators, liquid level, leak testers, natural gas and any other low pressure applications.

- Sizes**
2.5" Dial – Bottom and Back Connections
- Case**
Steel & 304 Stainless steel
- Accuracy**
± 0.5% ASME B40.1 Grade B



Brass or 316SS Internals

Elite 450SS Process Gauge – Solid Front

WGI's Elite 450 NACE process gauge was engineered for the oil and industrial process industries designed with operator safety in mind. Features a solid front blow-out back

- Sizes**
4.5" – Bottom connection
- Case**
304 Stainless steel
- Accuracy**
± 0.5% ASME B40.1 Grade B



Ammonia Gauges

WGI ammonia gauges are designed for rugged performance in the measurement of vacuum and pressure for any system or piece of equipment that is charged with ammonia.

- Sizes**
2.5" & 4" Dial – Bottom & Back connectio
- Case**
304 Stainless Steel
- Accuracy**
± 2-1-2% ASME B40.1 Grade B

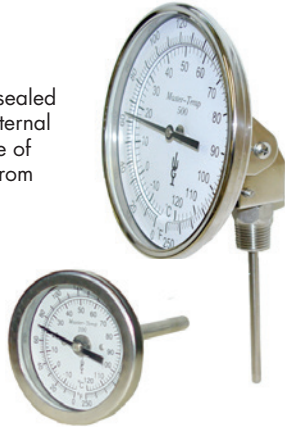


Commercial or Agricultural Models Available

Bi-Metal Thermometers

Features a 304 stainless steel hermetically sealed case providing weather tight protection. External recalibration screw on rear of case for ease of calibration. Silicone fill available. Ranges from -40°C to 1000°C.

- Sizes**
2", 3" & 5" Dial
- Case**
304 stainless steel
- Accuracy**
± 1% ASME B40.3 Grade A



Pocket Thermometers

General purpose pocket thermometer used mainly for field or lab testing. Ranges from -40°C to 500°C. External recalibration screw on rear of case. Also available in digital or alcohol reading.

- Size**
1 3/8" Dial (PT1835)
5" Scale (GT-120)
- Case/Stem**
304 Stainless Steel (PT1835)
Glass stem (GT-120)
- Accuracy**
± 2% full scale



Industrial Thermometers

WGI Industrial thermometers are mainly used by the boiler industry in HVAC applications. The adjustable angle case can be moved to any viewing position for enhanced readability.

- Scale sizes**
7" & 9"
- Case**
Die-cast Aluminum
- Accuracy**
± 1% ASME B40.1 Grade B



Magnetic Thermometers

WGI bimetal magnetic surface thermometers are ideal for use on engines, bearings, pipes, tanks, ovens or any flat metallic surface. Rear recalibration adjustment standard. Ranges from -100°F to 500°F

- Size**
2" Dial
- Case**
Aluminum
- Accuracy**
± 2% full scale



Hot Water Thermometers

WGI hot water thermometers are typically used in hot water heating systems, boilers and hydronic heating systems. Complete with removable NPT or solder brass thermowell for maintaining a sealed system.

- Size**
2" Dial
- Case**
Aluminum
- Accuracy**
± 5° F / 2°C full scale



Tridicators

WGI tridicators indicate pressure, temperature and altitude in one compact instrument. Intended for use on all types of hot water heating systems

- Sizes**
2.5" & 3.5" Dial
- Case**
Drawn steel
- Accuracy**
± 1% ASME B40.1 Grade A



Brass Ball Valves

601 Series ball valves are an economical full port NPT brass ball valve featuring a cast brass body for durability and superior corrosion resistance

Sizes
1/4" to 4" NPT

Body
Cast brass – 600 WOG

Porting
Full port



High Flow Needle Valves

Rated at 10,000 psi working pressure to cover most applications. Features adjustable PTFE packing, and non-rotating stems for high throttling applications.

Sizes
1/8" through 1" NPT
Body material
A105 carbon steel & 316 Stainless steel

Seat
Hard seat
Pressure Rating
10,000 PSI @ 100°F



Brass Ball Valves – Gas / Sprinkler Service

2-Piece, full port, brass ball valves are used in commercial and industrial applications for a full range of liquids and gases. They feature a bottom-loaded blow-out proof stem, virgin PTFE seats, double o-rings, chrome plated brass ball, brass adapter, and steel handle.

Sizes
1/4" through 2" NPT or Soldered

Body
Cast brass – 600 WOG

Porting
Full port



Standard Flow Needle Valves

Rated at 6,000 psi working pressure to cover most applications. Features adjustable PTFE packing, and non-rotating stems for standard throttling applications.

Sizes
1/8" through 1" NPT
Body
A105 carbon steel & 316 stainless steel

Pressure rating
6,000 PSI at 100°F
Seat
Hard seat



Conforms to NACE

Miniature Soft Seat Needle Valves

WGI miniature needle valves feature soft seats for use with any medium that requires a bubble tight shut off. Available in straight or angle pattern.

Size
1/4" NPT
Body Material
A105 carbon steel (zinc plated)
Or 316 stainless steel
Pressure rating
3000 psi @ 100°F
Seat
Soft seat (Delrin)



Soft Seat Needle Valves

Soft seat needle valves are designed for use with various instrumentation equipment and can be installed to control, isolate, measure, calibrate, equalize, drain or vent the pressure of gases and liquids.. Features bubble tight shutoff.

Sizes
1/4" through 1" NPT
Body material
A105 carbon steel, 316 stainless steel
Pressure rating
6000 PSI @ 100°F
Seat
Soft Seat (Delrin)



Angle Pattern Needle Valves

Angle pattern needle valves are available in carbon and stainless steel. Angle pattern valves will allow the installer / design engineer to optimize space and components in a system. Mainly used by the propane and agricultural industries.

Sizes
1/8" Through 1" NPT

Body
A105 carbon steel, 316 stainless steel

Seat
Hard seat Pressure rating



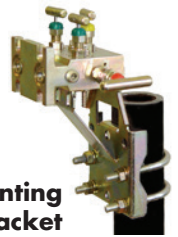
2, 3 & 5 Valve Manifolds

WGI manifolds are designed for remote or separate mounting. Connecting system impulse lines, transmitters & chart recorders. NACE models are available.

Configurations
NPT x NPT, NPT x Flange
Body Materials
A105 carbon steel, 316 stainless steel

Seat
Soft seat (Delrin) Hard seat available

Pressure rating
6000 psi @ 200°F



Pipe mounting Bracket (optional)

Gauge Valves (Block and Bleed)

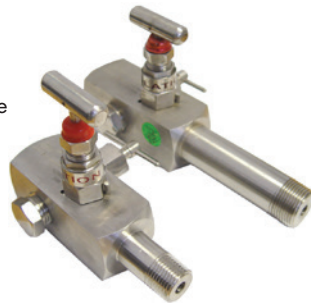
WGI multi-port gauge valves allow for easy positioning of gauges or pressure switches without requiring additional penetration of the main piping system. Metal to metal seats for high-pressure applications.

Sizes
1/2" x 1/2" NPT & 3/4" x 1/2" NPT, 1/2" x 1" NPT

Body
A105 carbon steel, 316 stainless steel

Seat
Hard seat

Pressure rating
10,000 PSI @ 100°F



Check Valves

VU series in-line check valves are designed to allow free flow of oil in a hydraulic system in one direction and block flow in the reverse direction. Can also be used in natural gas or air service.

Sizes
1/4" Through 2" NPT
Body Materials
A105 carbon steel & 316 stainless steel

Cracking Pressure
7 PSI

Pressure rating
3675 Through 10,000 PSI



High Pressure (15,000psi)

Metal to metal seats for high-pressure applications. High flow port.

Sizes
1/2" NPT Only
Body
316 stainless steel
Pressure rating
15,000 psi @ 100°F



Needle Valve Accessories

Bleed Valves / Plugs
Replacement bleed valves and plugs for multi-port gauge valves. Rated at 10,000 psi



Thermowells

Thermowells are used to provide isolation between a temperature sensor and the environment, either liquid, gas or slurry. A thermowell allows the temperature sensor to be removed and replaced without compromising either the ambient region or the process.

Styles

Threaded and flanged

Shank styles

Straight, stepped & tapered

Bore Sizes

.260, .385 & .702



Diaphragm Seals

Diaphragm seals use a flexible barrier or diaphragm seal to isolate a pressure sensor such as a gauge or transmitter from the process fluid. Diaphragm seals are available in many configurations.

Sizes

1/4" NPT & 1/2" NPT

Body material

316 Stainless steel
(other materials available)

Pressure Rating

30" Vac to 2,500 PSI @ 100°F



Siphons / Cooling Towers

Gauge siphons are used to protect the pressure gauge from the effect of hot pressure media such as steam and also to reduce the effect of rapid pressure surges. The siphon allows condensate to form and be collected inside the siphon, preventing the hot media from coming in direct contact with the pressure instrument.

Types

Pigtail, barrel & finned

Body

Pigtail – Carbon or stainless steel
Barrell & Finned – stainless steel



Snubbers

Snubbers are used to reduce the effects of pulsation on gauges, transmitters and pressure switches in most water, light oil or air services.

Sizes

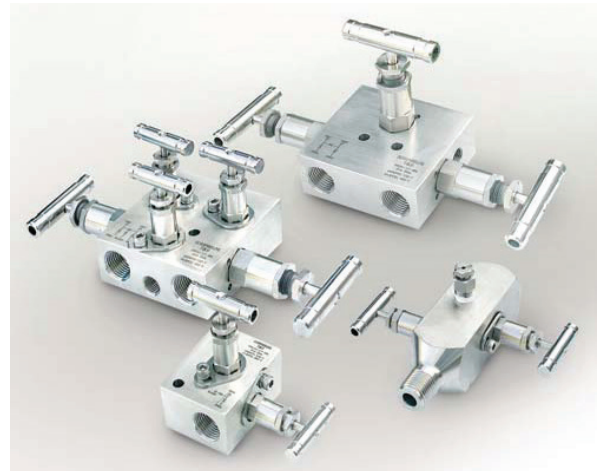
1/4" & 1/2" NPT

Body

Brass & 316 stainless steel
Pressure rating
10,000 PSI at 100°F



SUPERLOK®



Calibration Services

Western Gauge and Instruments can offer the following services at our repair centre located in Edmonton, Alberta and Saskatoon Saskatchewan.

Deadweight Certificates: WGI will certify the accuracy of your pressure devices, temperature instruments traceable to the National Institute of Standards and Technology (NIST).

Fluid Filling: Silicone or Glycerin can be applied inside of a Pressure Gauge or Bi-metal Dial Thermometer.

Instrument Tagging: Stainless Steel or Aluminum tags are available for marking an instruments field location or use.

Mounting Diaphragm/Chemical

Seals: WGI can mount and fill your Diaphragm seals with either Silicone Oil, Glycerin, or high temperature fill.

Custom Dial Faces: Custom Dials are available in many different scales including Psi, kPA, kg/cm², cm of H₂O, feet of water, inches of Hg, inches of H₂O, ounces per square inch, bar, mBar, MPa, and many more. Customer "name on dial" service also available.

Apollo Valves



FasTest Fittings



Midwest DPI

A low cost differential pressure gauge for use in measuring the pressure drop across filters, strainers, separators, valves, pumps, chillers, in addition to local flow indication and control.

Sizes

2.5", 3.5" & 4.5" Dial

Body Materials

Aluminum & 316 stainless steel

Ranges

0-5 PSID through 0-110 PSID



Gauge Minder

The Model 200 "Gauge Minder" features a pressure limiting valve that blocks off excess pressure to the instrument thus preventing calibration failure, internal damage, and "blowout" from over-ranging, a principal cause of instrument failure.

Sizes

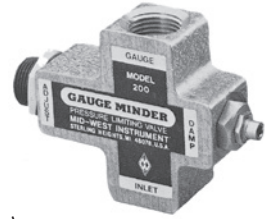
1/4" NPT & 1/2" NPT

Body material

316 Stainless steel (other materials available)

Pressure Rating

10,000 PSI @ 100°F



Thermocouple and RTD

JMS designs and manufactures a complete line of high quality standard and customized temperature sensors including Thermocouples, RTD's and Thermowells as well as a wide selection of temperature accessories.



- Miniature and Industrial Thermocouples
- Plastics Industry Temperature Sensors
- Resistance Temperature Devices (RTDs & PRTs)
- Sanitary and 3-A Certified Temperature Sensors
- Specialty Sensors
- Thermowells, Protection Tubes, and Coatings Accessories
- Thermocouple and RTD Wire
- Transmitters
- Thermistors
- Miscellaneous Temperature Instruments

High Pressure Valves, Fittings & Tubing

Eight pressure classes from 10,000 psi to 150,000 psi. Tubing connections from 1/16" to 1" and pipe connections from 1/8" to 1" NPT. Complete line of specialty valves, air operated valves, accessories and tooling



Taper Seal – 10 & 15,000 psi

Medium Pressure – 20,000 psi

High Pressure – 30, 40 & 60,000 psi

Ultra High Pressure – 100,000 & 150,000 psi

Specialty Valves

Air operated Valves

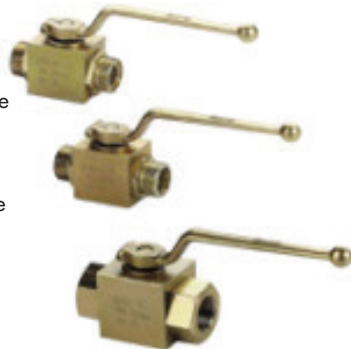
Accessories

Tooling



High Pressure Ball Valves

BKH high pressure ball valves are made of nickel plated carbon steel and are primarily used in the hydraulic industry where pressures operate at 3000 psi and greater. BKH series ball valves are field repairable, have blowout proof stems and delrin ball seats.



Sizes

1/4" through 1-1/2" NPT

Connection

NPT and ORB Threads

Configurations

Two way and three way

Porting

Full port

Pressure Transducers / Transmitters

Transducers are commonly used in applications for industrial OEMs, fluid power, hydraulic systems, fuel cells, medical gases, HVAC/R, water management, oil and gas exploration, aerospace, scientific research, aircraft ground support and military. Many Sensor products offer UL/cUL, CSA approvals for hazardous environments (ATEX and CRN pending).



Models Include

- General Purpose
- High Accuracy
- Industrial
- Differential Pressure
- Submersible
- OEM
- Hazardous Area UL/CSA Approved

Instrument Air / Gas Regulators

The Marsh Bellofram Type 50 & Type 50 NACE are reliable, precision filter air set pressure regulators, designed for instrumentation and general purpose use in both standard (Type 50) and corrosive environments (Type 50 NACE).

Port Size

1/4" NPT

Body

Die-cast aluminum

Inlet Pressure

250 PSI

Pressure Ranges

0-10, psi, 0-30 psi, 0-60 psi & 0-120 psi



High Pressure Regulators

The Type P39 is the industries largest and most easily configurable gas pressure regulator. Units are offered with a choice of three different seat materials, allowing the designer to custom fit for individual applications.

Configurations

NPT x NPT, NPT x Flange

Body Materials

Brass, stainless steel, nickel plated

Seat

Soft seat (Delrin) Hard seat available

Inlet Pressure

5500 psig



P627 High Flow Gas Regulator

The P627 is a spring loaded, direct-operated regulator for both low and high pressure applications in the oil and gas industries. These regulators are also available in an external pressure registration model (P627M), and NACE construction.

Body

A105 carbon steel, 316 stainless steel

Seat

Hard seat

Pressure rating

10,000 PSI @ 100°F



Magnehelic Differential Pressure Gauge

The Magnehelic® gauge is the industry standard to measure fan and blower pressures, filter resistance, air velocity, furnace draft, pressure drop across orifice plates, liquid levels with bubbler systems and pressures in fluid amplifier or fluidic systems.

Size

4" Dial

Housing

Die cast aluminum case and bezel, with acrylic cover

Pressure Limits

-20" Hg. to 15 psig. † (-0.677 bar to 1.034 bar)

Temperature Limits

20 to 140°F.* (-6.67 to 60°C)



Accu-Cal Plus

Rugged, accurate and easy to use. The Difference is the greater accuracy possible with a digital display and, through an advanced design.

Accuracy

specified to be 0.05% full scale over the temperature range of 0 °C (32 °F) to 50 °C (122 °F).

Digital Gauges

Compatible liquids and combustible gases.

Sizes

1/4" NPT

Body Housing

Aluminum

Accuracy

±0.25% or ±0.5% Full Scale Accuracy, NEMA 4X Housing



Direct Drive Gauges

The advantage of Perma-Cal® direct drive over conventional C-tube gauges is simple, there is only one moving part. No gears, linkages, or springs to wear or break. Perma-Cal® gauges have a unique helical-wound elastic element that is attached directly to the pointer shaft. This eliminates the need for any movement-amplifying gears or linkages (the parts of a C-tube that fail most frequently).

- Accuracy, Grade 3A, 0.25% of FS
- Overpressure without calibration shift, 150% of FS pressure
- Burst pressure +500% of FS.
- Wetted parts, Inconel X-750 element, 316SS stem, 304SS capillary, silver solder



Additional Product Lines (distributed Products)

Mid-West Instrument

- * Differential Pressure Gauges (DPI)
- * Gauge Minders
- * Backflow Test Kits



- * Thermocouples
- * RTD's
- * Explosion Proof Heads
- * Wire
- * Accessories



- * Magnehelic Gauges
- * Flow Meters
- * Level Gauges / Switches
- * Pressure Switches
- * Pressure Transducers



- * High Pressure Valves
- * High Pressure Fittings
- * Pumps & Intensifiers
- * Vessels



- * Pressure & Level Instruments
- * Load Cells
- * Pressure Transducer



- * High Pressure Ball Valves
- * High Pressure Check Valves



- * Air / Gas Regulators
- * Pressure Gauges
- * I/P & E/P Transducers
- * FRL's
- * Diaphragm Cylinders



- * Ball Valves
- * Actuator
- * Safety Relief Valves



- * Direct Drive Pressure Gauges



- * Calibration Fittings
- * High Pressure Swivels
- * TwistMate Connectors



- * Digital Thermometers
- * Pocket Thermometers
- * Min/Max Thermometers
- * Food Service Products



- * Tube Fittings
- * Manifolds
- * Valves
- * Accessories



- * High pressure regulators
- * Natural Gas & Propane Regulators



- * Pressure Gauges
- * Thermometers
- * Back-flow Test Kits



- Western Gauge
- Mercer Valve
- Superlok
- GPM Pump



Proud member of the Unified Valve Group

PHONE:

- Calgary:..... 403.236.4888Fully Stocked Location
- Grande Prairie:.... 780.539.7800Stocking Soon!
- Edmonton:..... 780.463.3800Fully Stocked Location
- Red Deer:..... 403.340.3922Stocking Soon!
- Saskatoon: 306.986.0099Fully Stocked Location
- Brooks: 403.362.4272Stocking Soon!
- Fort St John: 250.787.0080Fully Stocked Location

CONTACT US TODAY

EMAIL: sales@wgilt.com

unifiedvalve.com